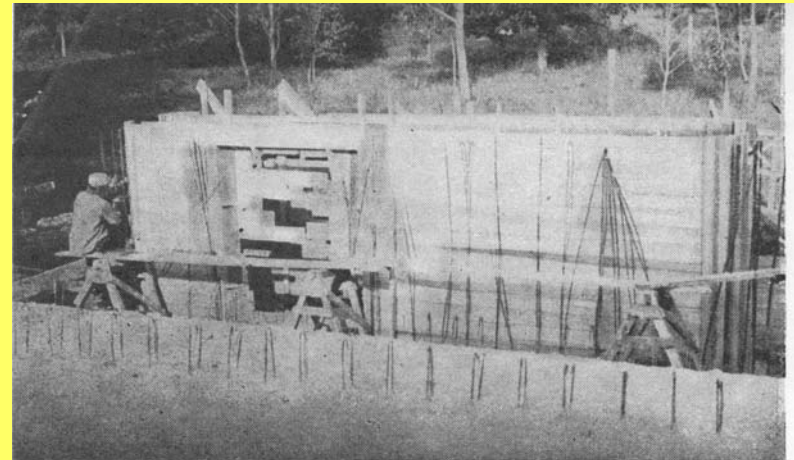
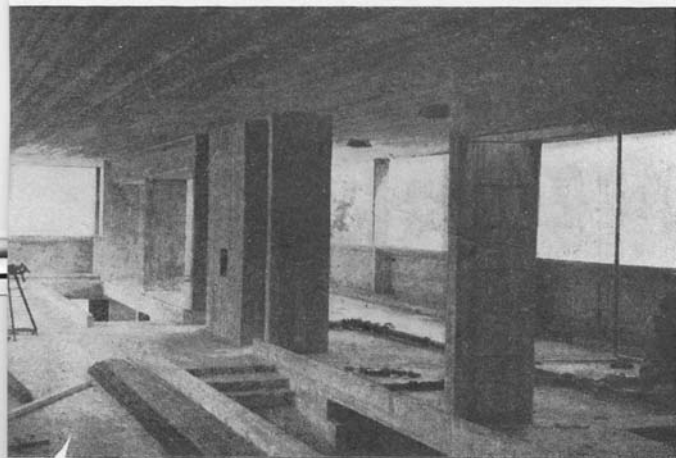




# The construction of the house



# The House, today



Front of the house



Side of the house



Front left of the house

# Golden proportion

- The house on the brook has been built following a certain number in the making of the floor, the ceiling, and even the windows: The golden proportion
- The golden proportion is, in fact, the number “Phi”, 1.1618, that appears when you divide the base of the rectangle that is on the roof (for example), by the side; and it will give you this number.

# Flora surrounding the house

- The house has different kinds of trees and plants that give a special environment to the house



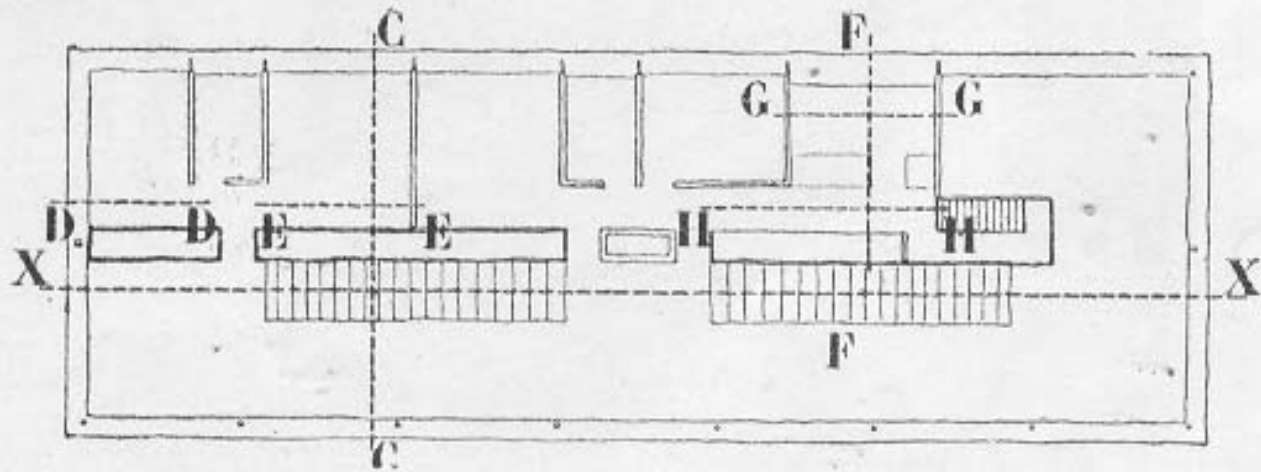


- The trees, like pine, oaks, etc. have been planted exactly 6 mts one from the other. Most of the trees has climber plants on their logs.

- There are certain kind of flowers around the house, like daisies, and orchids.



# Blueprints of the house





The image features a black rectangular background centered on a stage, framed by red curtains. The curtains are pulled back, revealing the black area. The text is centered on the black background.

THE END.

Ignacio Hegoburu  
Manuela Jousset  
Patricio Bruni